



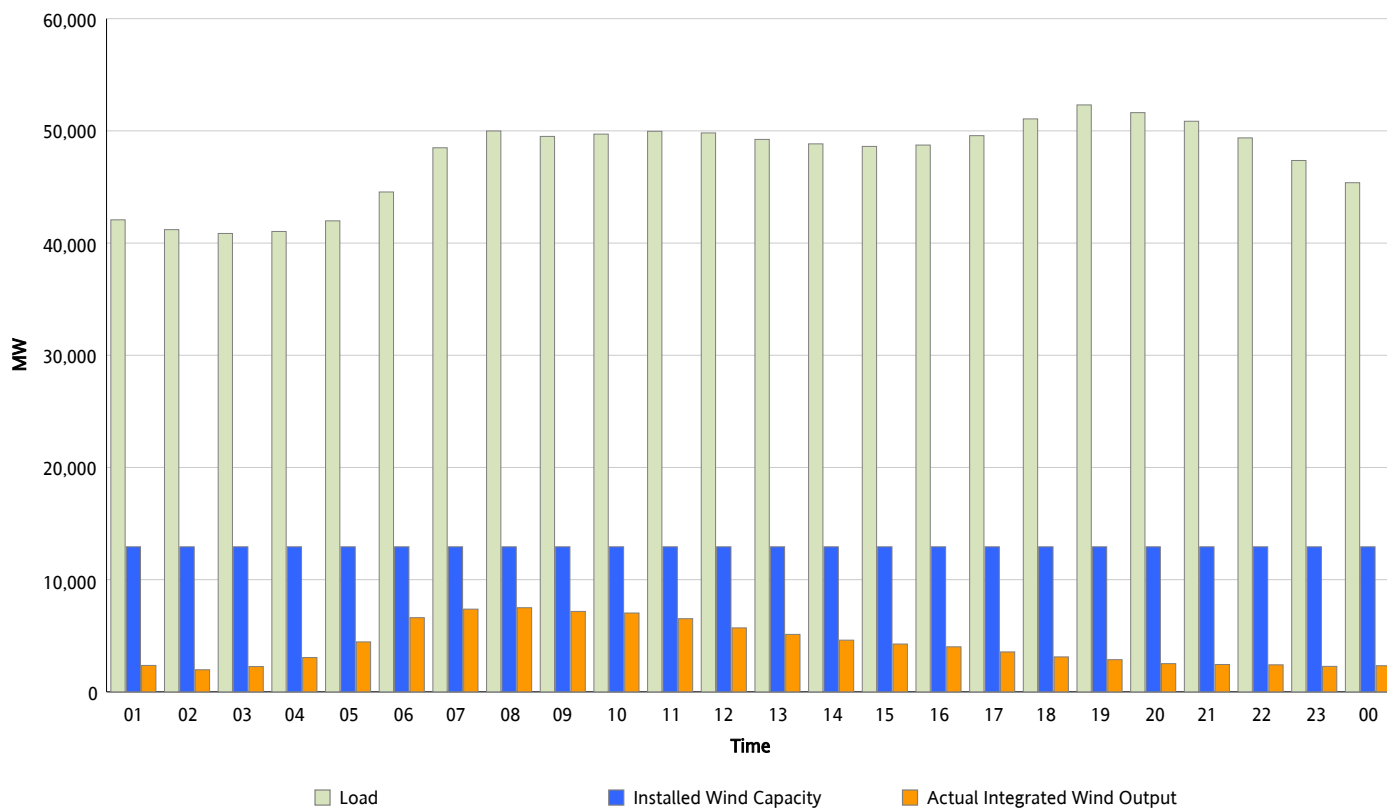
## ERCOT Grid Operations

### Wind Integration Report : 01/09/2015

Peak Load	52,316 MW
Load Peak Hour (HE)	19
Wind Over Peak	2,870 MW
Wind Record 12/25/14	10,957 MW
Max Wind Value*	7,634 MW
Wind Peak Time	07:20
Wind Integration %	15.16 %

#### Hourly Average Actual Load vs. Actual Wind Output

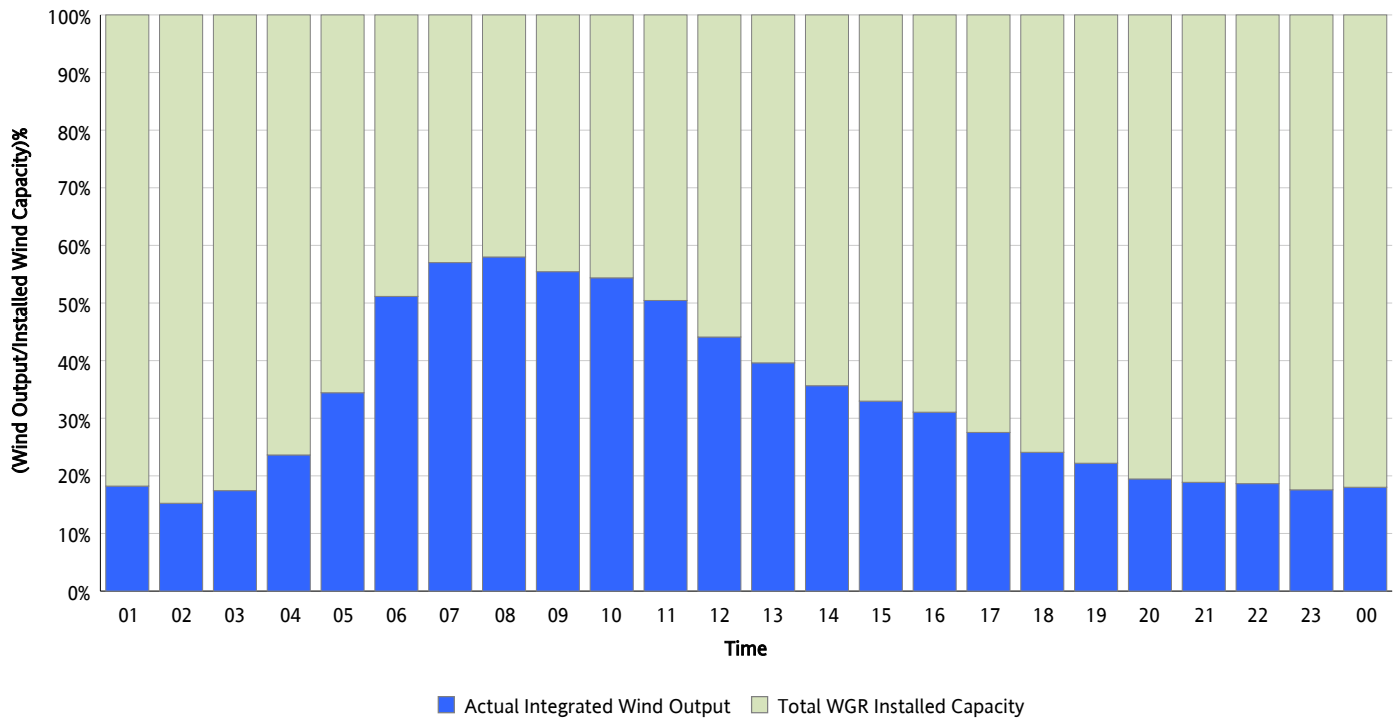
01/09/2015



*\* Wind Record and Wind Max represent instantaneous values and the rest of the values are integrated over the hour.  
Capacity numbers used in the graphs are based on the expected commercial operation date of each Wind Generation Resource.*

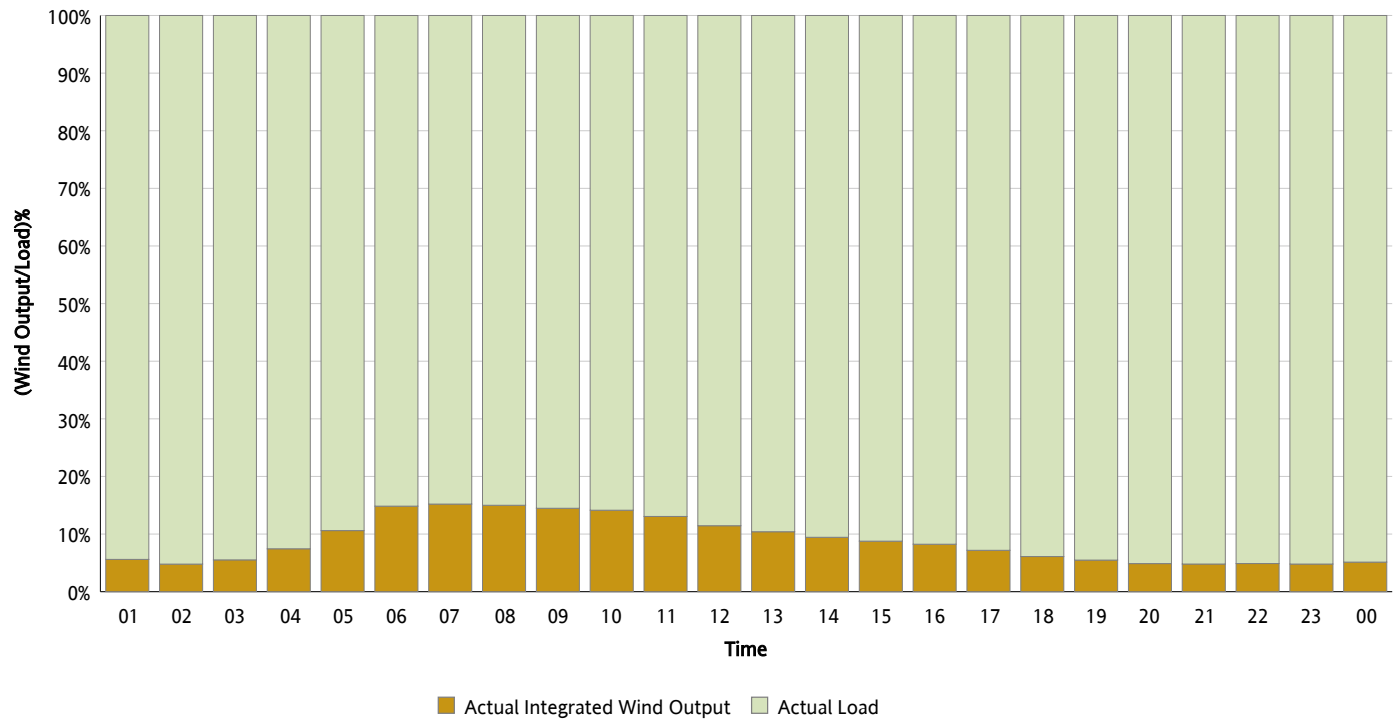
## Actual Wind Output as a Percentage of the Total Installed Wind Capacity

01/09/2015



## Actual Wind Output as a Percentage of the ERCOT Load

01/09/2015



## ERCOT Load vs. Actual Wind Output

01/02/2015 - 01/09/2015

